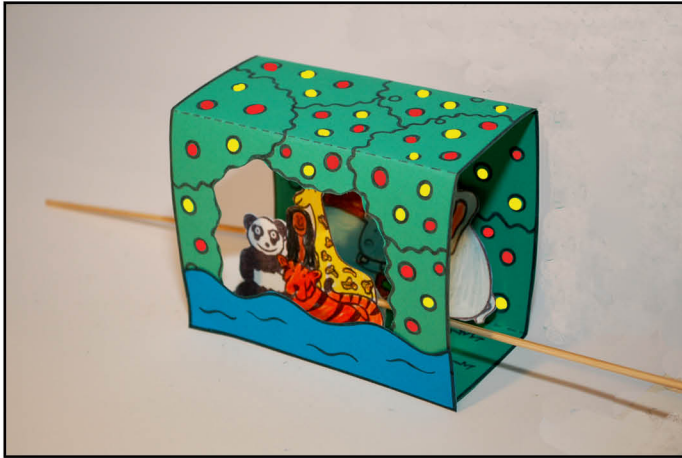


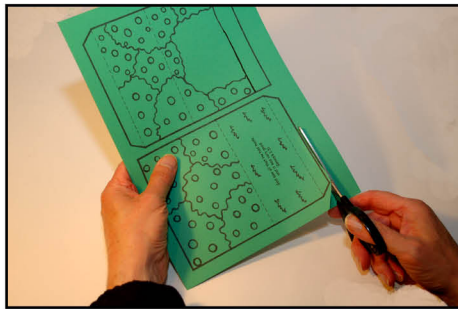
The Garden of Eden

Genesis 1:1-2:25

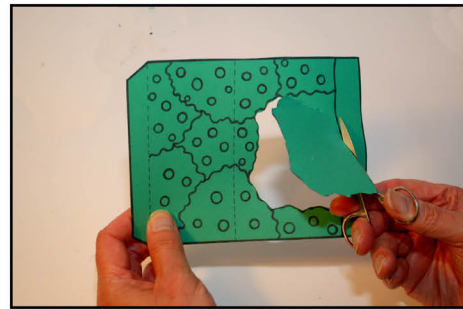


You will need:

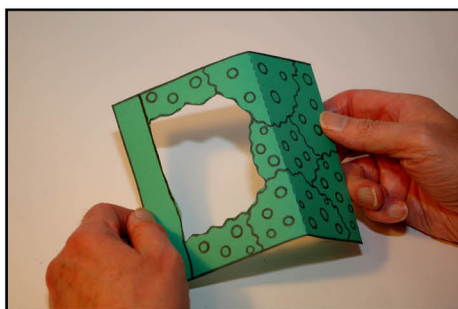
- template 1 printed onto green card
- template 2 printed onto white card (choose pre-coloured or plain)
- template 3 printed onto blue card
- coloured pencils or felt tips
- scissors
- tape
- kebab sticks or straws
- coloured dot stickers



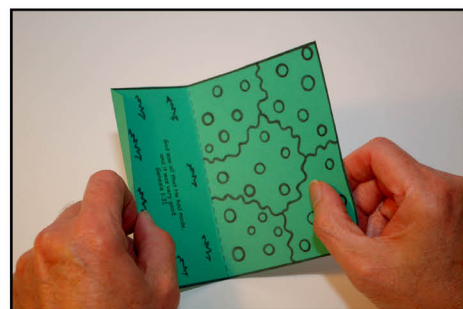
Step 1: cut out template 1



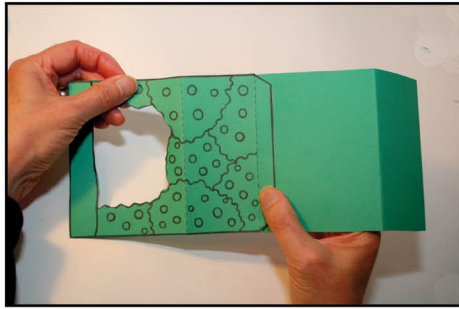
Step 2: cut out marked area



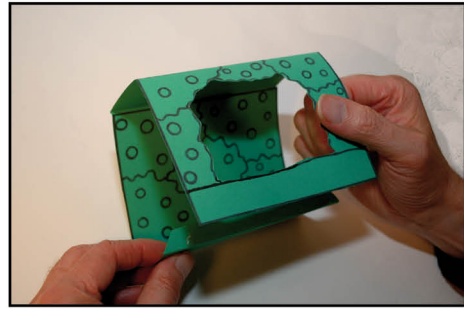
Step 3: fold piece with cut out along dotted lines with pattern facing outwards



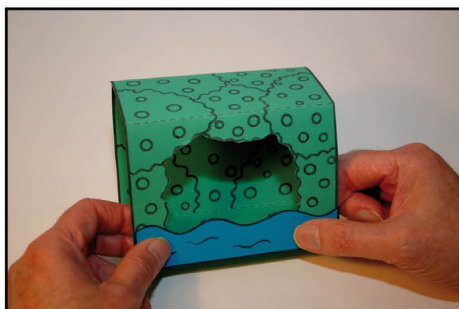
Step 4: fold other piece along dotted lines with pattern facing inwards



Step 5: join the two pieces together using the tab



Step 6: fold it round and stick the other tab to make a box



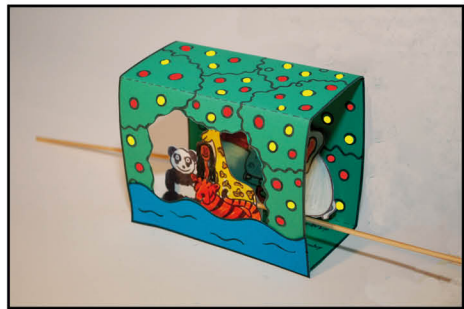
Step 7: cut out waves from template 3 and stick to the front



Step 8: colour in animals on template 2 and cut them out



Step 9: stick kebab sticks on the back of each one pointing out sideways

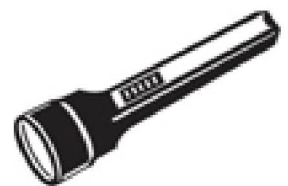


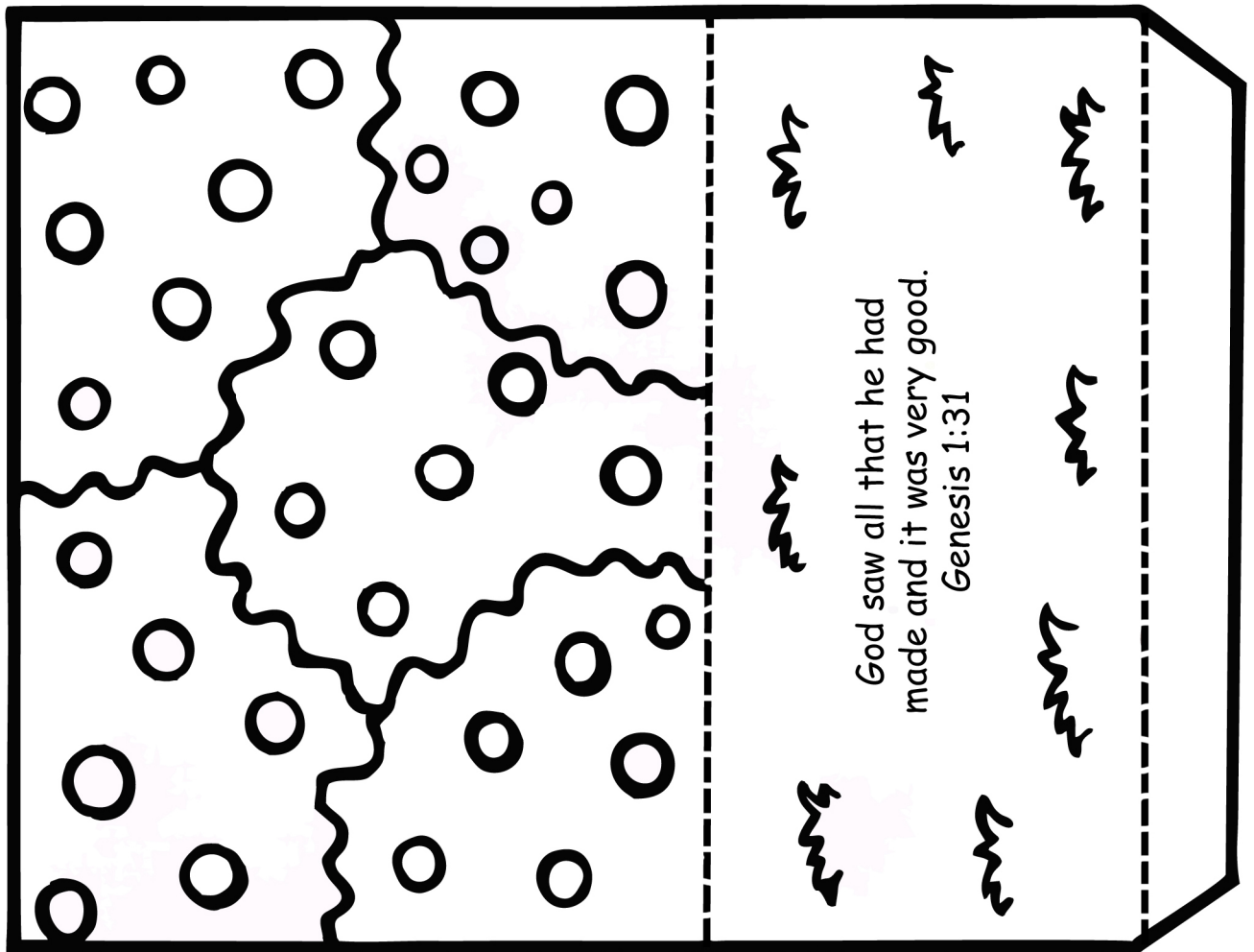
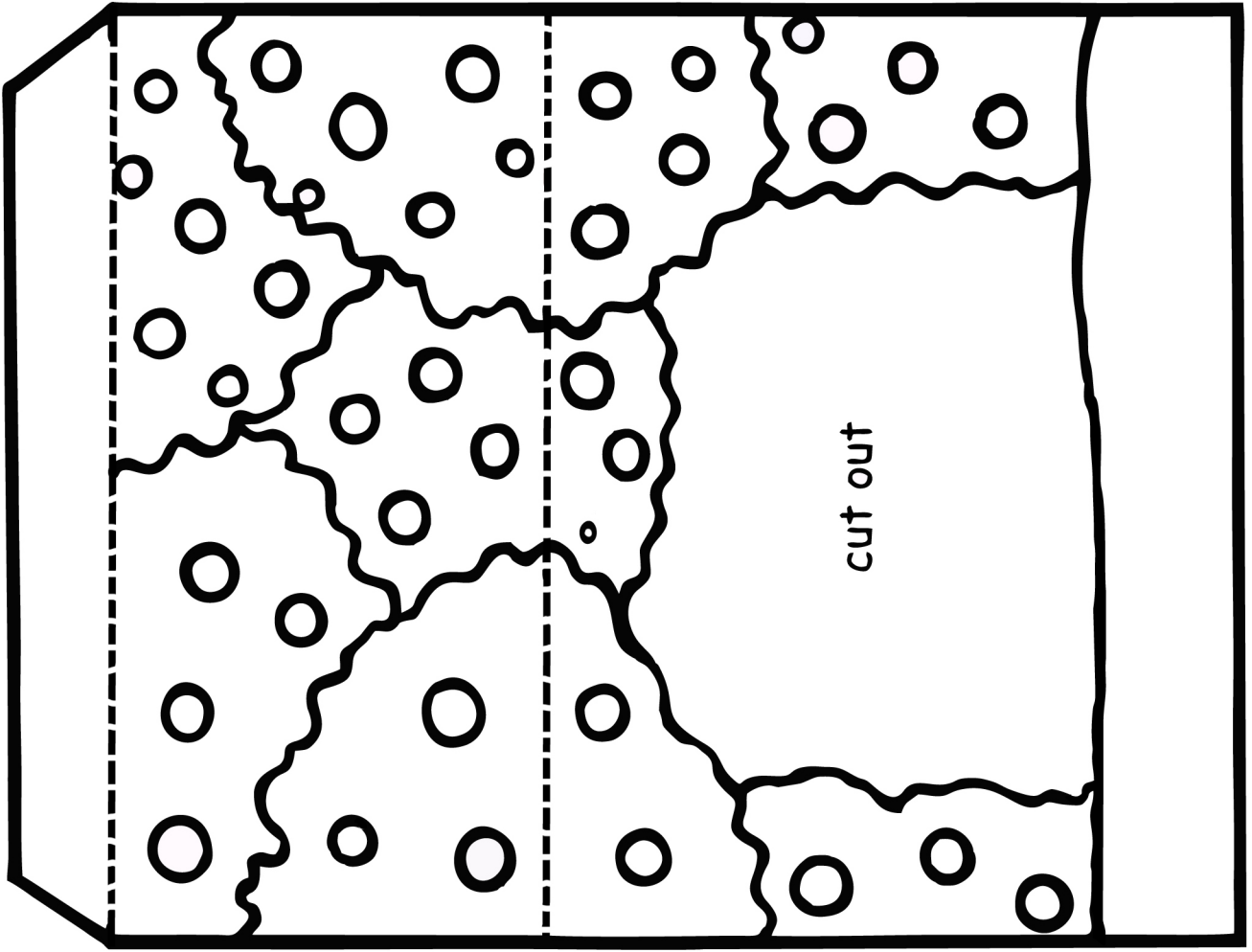
Step 10: stick coloured dots onto trees



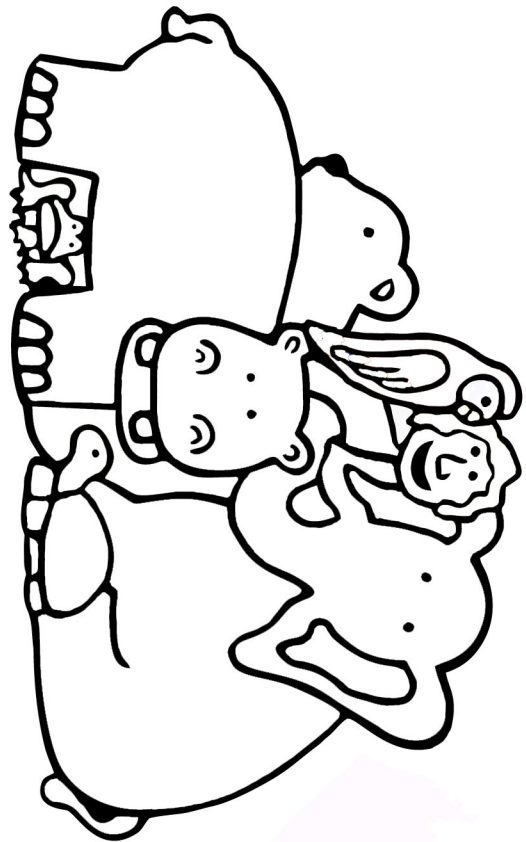
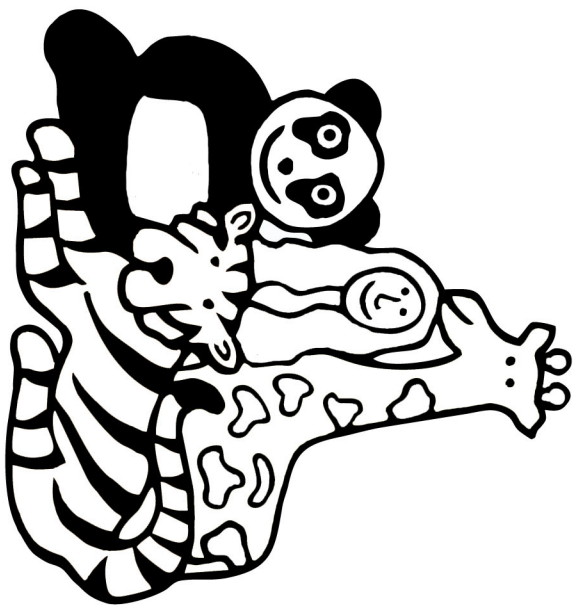
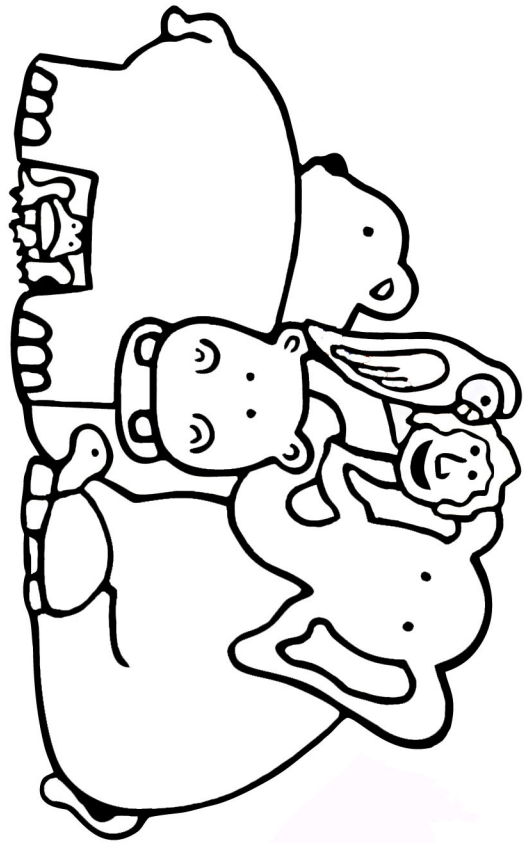
For a shorter session:
prepare step 2
For a shorter session still:
pre-cut the pieces
pre-coloured template provided

God created a perfect place for people to live and be friends with him.

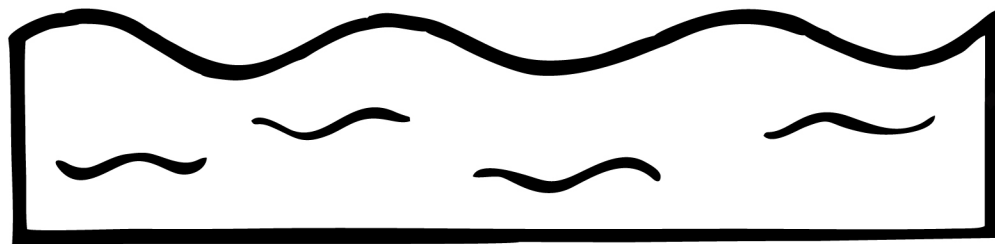
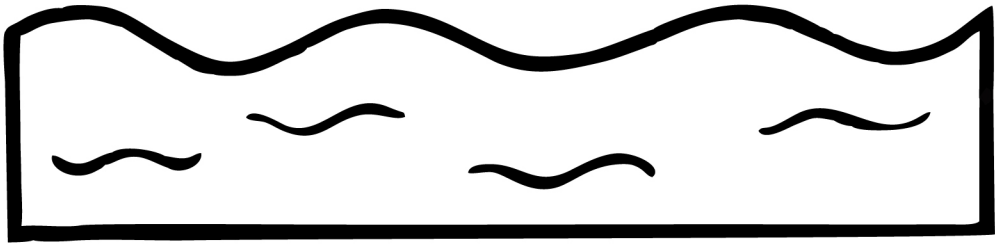
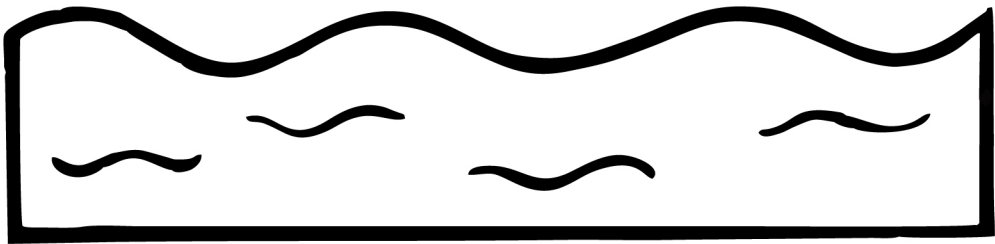
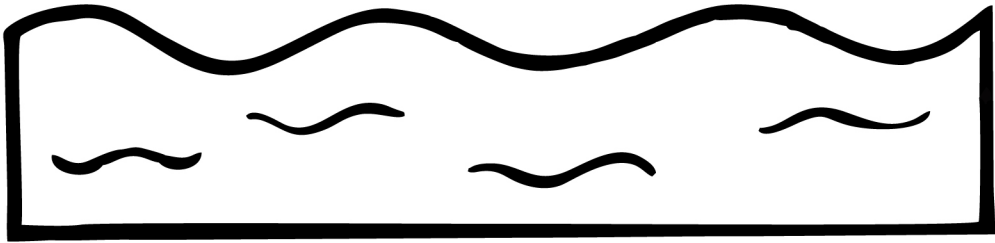
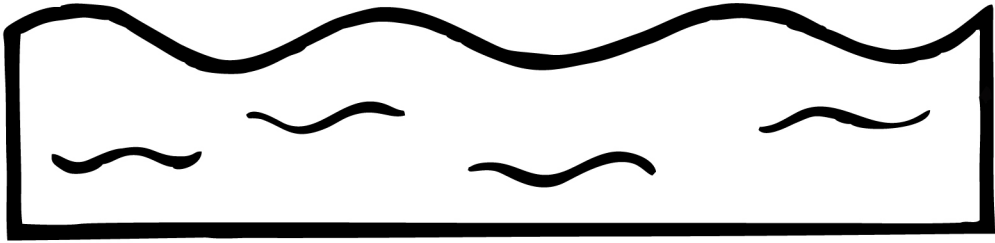




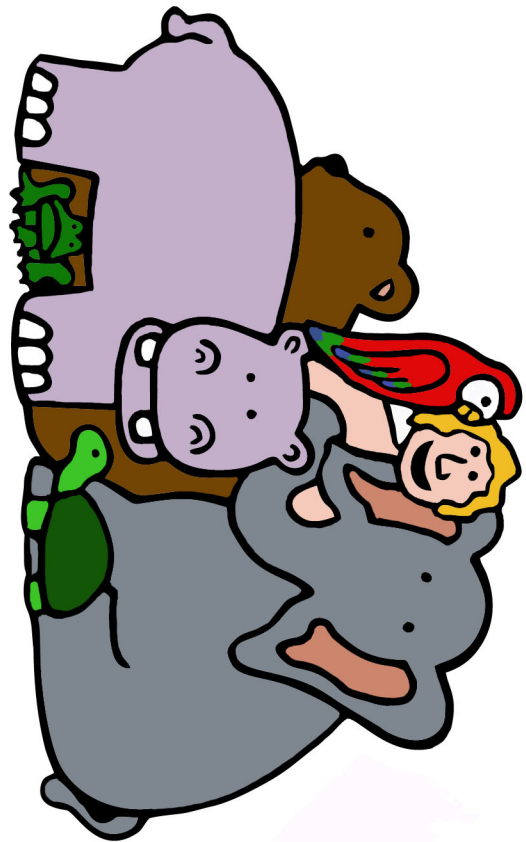
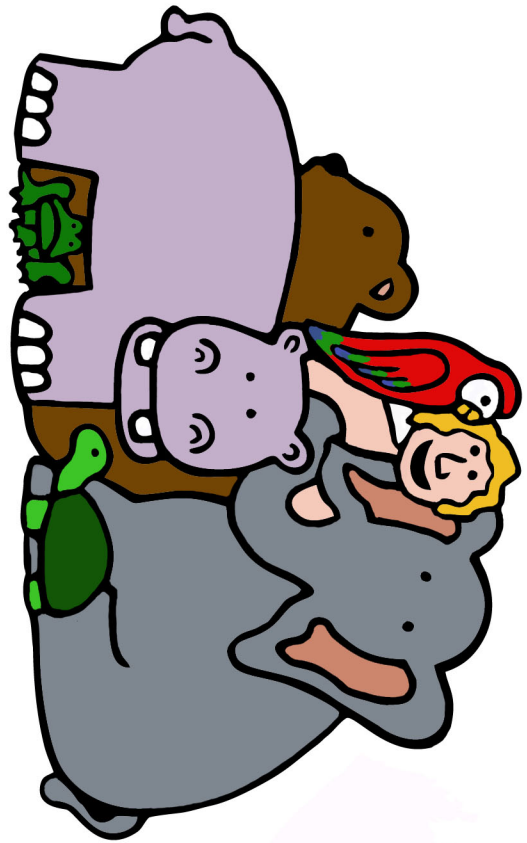
Template 1



Template 2



Template 3



Template 2